

# Offender Management

**95%** Of Pre-Sentence Reports completed to timescales required by the Courts Service.

**35** Average working days from relevant unacceptable failure to resolution of the case (60% of community penalty breaches to be resolved within 25 working days).

**90%** Of breach proceedings initiated within ten working days of relevant unacceptable failure.

**70%** Of orders and licences successfully completed.

**85%** Of arranged appointments which the offender attends in first 26 weeks of order or licence.

**70%** Of cases to reach the six month stage without requiring breach action.

**1,440** Learning Skills Council (OLASS) referrals.

**90%** Of OASys assessments in non-PPO Tier 4 cases to be completed or updated within five days following sentence or release on licence.

**90%** Of OASys assessments in non-PPO Tier 1, 2 & 3 cases to be completed or updated within fifteen days following sentence or release on licence.

**90%** Of OASys assessments to be completed or updated within five days following sentence or release on licence for all PPO cases.

**90%** Of OASys assessments to be completed or updated within appropriate timescales for those entering custody.

# Interventions

**1%** Or below of unpaid work offender days which are lost because of stand downs - either on the day notified or in advance.

**75%** Of unpaid work hours ordered by the court which are worked in the year.

**1,320** Successful completions of unpaid work requirements.

**450** Offenders or more who sustain employment for four weeks.

**564** Accredited offending behaviour programmes completed by offenders.

**36** Accredited sex offender treatment programmes completed by offenders.

**72** Accredited programmes for domestic violence completed by offenders.

**480** Offenders who start a Drug Rehabilitation Requirement (DRR) or Drug Treatment & Testing Order (DTTO).

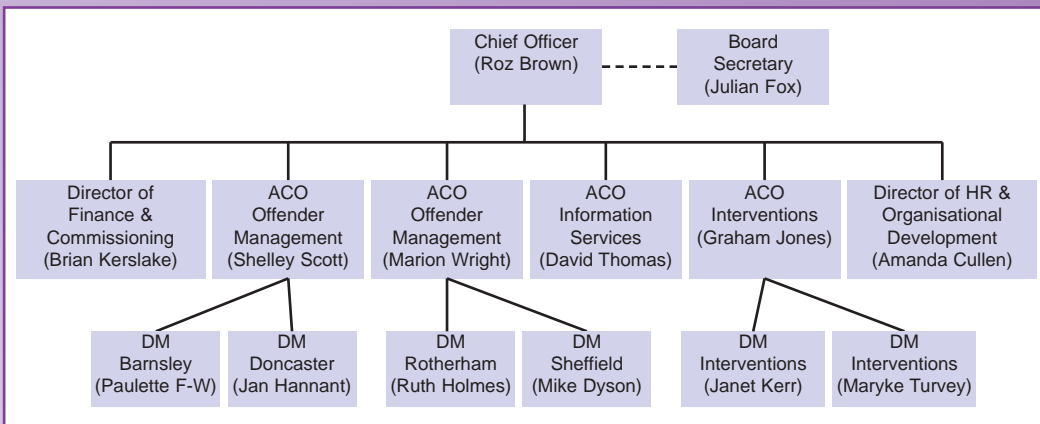
**75%** Of offenders retained on DRR / DTTOs for 12 weeks.

**85%** Of victims contacted within eight weeks of an offender receiving 12 months or more for a serious sexual or violent offence.

**10%** The minimum sub-contracting target to be achieved during 2007-08.

**Key Performance Targets 2007-08**

# Senior Management Structure



# South Yorkshire Probation Area



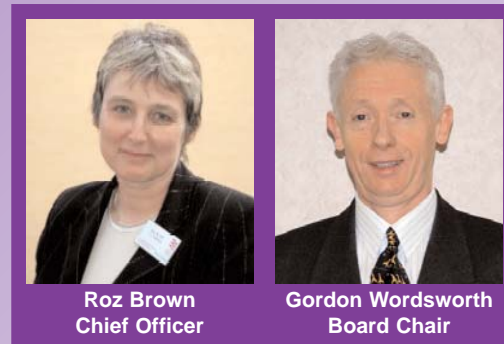
## Annual Business Plan Summary 2007-08

SOUTH YORKSHIRE

## Introduction

SOUTH Yorkshire Probation Area (SYPA) is one of 42 Areas that comprise the National Probation Service (NPS).

Local governance is through the South Yorkshire Probation Board (SYPB). The SYPB is accountable to the Director of the National Probation Service. The NPS is part of the National Offender Management Service (NOMS) which also includes the Prison Service.



Roz Brown  
Chief Officer

Gordon Wordworth  
Board Chair

## Our Values

South Yorkshire Probation Area believes that:

- Communities have the right to live free from crime and the fear of crime;
- People can change and develop;
- Whenever possible offenders should be enabled to play a full part in society;
- Working with others is more effective than working on our own;
- All people should be treated with respect, dignity and fairness;
- The diverse needs of service users, victims, offenders and staff must be valued and met equally;
- Its services should be provided to the highest quality, delivering best value for money.

## Our Mission Statement

The South Yorkshire Probation Area manages the punishment and rehabilitation of offenders under orders laid down by the Courts in order to protect victims and the general public and reduce re-offending.

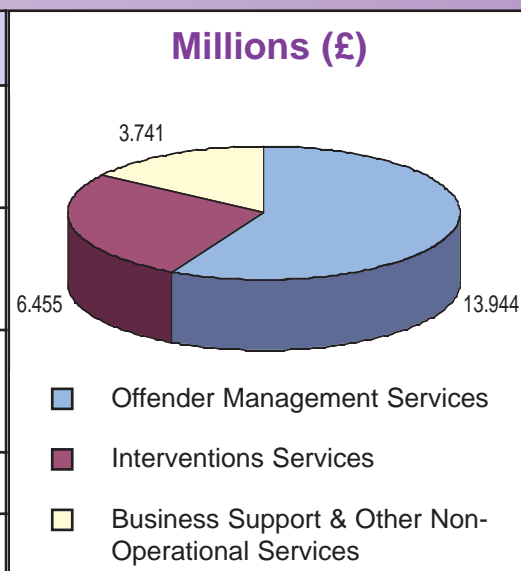
## Our Key Priorities

1. Protecting the public from harm;
2. Reducing re-offending;
3. Ensuring effective work with offenders by embedding the core management process ASPIRE into all our practice;
4. Ensuring diversity of provision within a 'lead provider' context;
5. Ensuring the provision of a service to appropriate service users which respects their diverse needs, experiences and requirements.

## Workload

Anticipated Caseload	Tier 1	Tier 2	Tier 3	Tier 4	Total
Pre-Release Cases	110	340	1,030	640	2,120
Community Sentence Cases	1,240	800	1,950	200	4,190
Post-Release Cases	90	200	540	110	940
<b>Total</b>	<b>1,440</b>	<b>1,340</b>	<b>3,520</b>	<b>950</b>	<b>7,250</b>
<b>Percentage</b>	<b>20%</b>	<b>18%</b>	<b>49%</b>	<b>13%</b>	

## Budget



## More Information

THE full SYPA Business Plan includes specific objectives for offender management, interventions and head office units, as well as details of top business risks and other key information. Staff can download a copy from the

SYPA intranet and it is also available on the SYPA web site:

[www.syps.org.uk](http://www.syps.org.uk)

